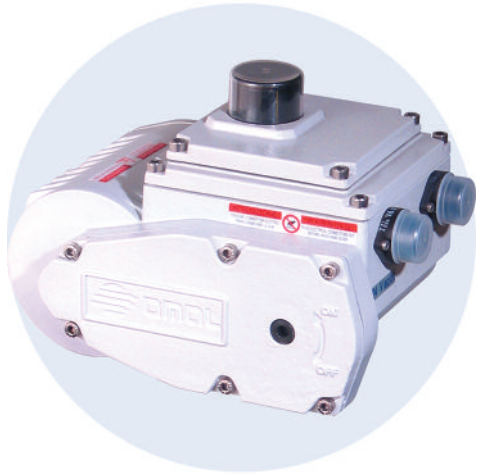


I4 Series

Electric Actuator



The I4 Series is a compact industrial duty quarter turn electric actuator specifically designed for ball and butterfly valves. The I4 Series incorporates a self locking gear train, IP65 weatherproof enclosure, visual position indicator, manual override and ISO 5211 mounting pad. The actuator is available in 115 VAC and 24 VDC/VAC with a complete line of accessories available.

FEATURES

- 90° travel (adjustable between 20° and 95°).
- Working torques of 300 in./lbs. to 2100 in./lbs.
- Duty cycle of 50%.
- Weatherproof enclosure to IP65 standard.
- IP65 standard connectors.
- Motor Class F insulation to 311°F.
- Ball bearing construction.
- Manual override.
- Visual position indicator.
- Space heater is standard.
- Extra 2 SPDT limit switches.
- Electrical connection: cable gland.

OPTIONAL FEATURES

- Modulating positioner.
- 4 aux. limit switches.
- Speed control.
- Potentiometer feedback.

I4 SERIES MODEL NUMBERING

Model Number: I4 XXXX

Output Torque: _____
0300 = 300 in./lbs.
0600 = 619 in./lbs.
1100 = 1150 in./lbs.
2100 = 2124 in./lbs.

Voltage: _____
A = 115 VAC
B = 24 VAC/VDC

Connectors (cable gland): _____
S = Straight (standard)
N = 90°

Optional:

Accessories: _____
EP = 4-20 mA DC Positioner
XLS = Extra Limit Switches
POT = Feedback Potentiometer
SC = Speed control

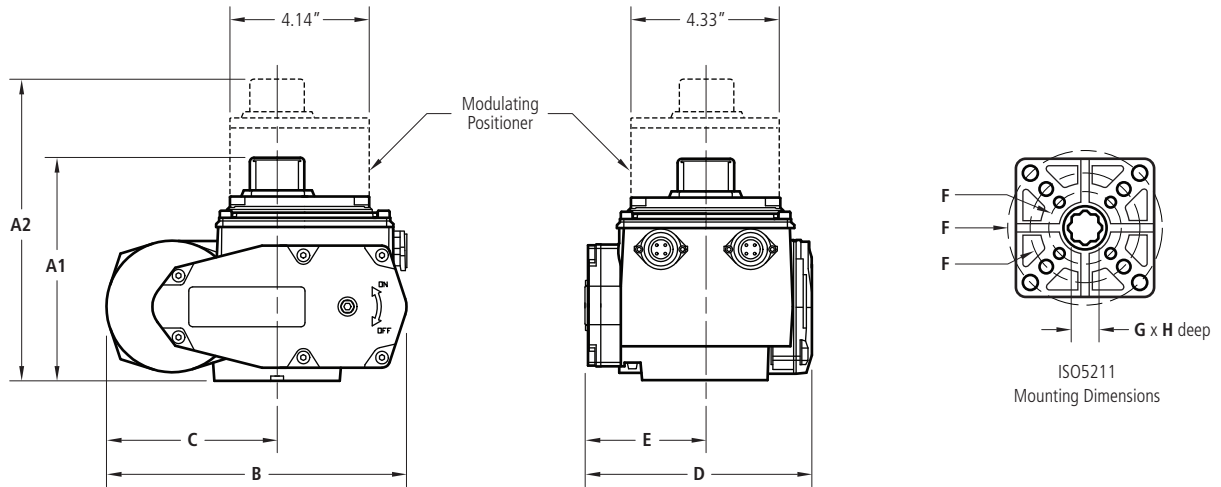
TEMPERATURE RANGE

0°F to 140°F

14 Series

Electric Actuator

(115 VAC and 24 VAC/VDC)

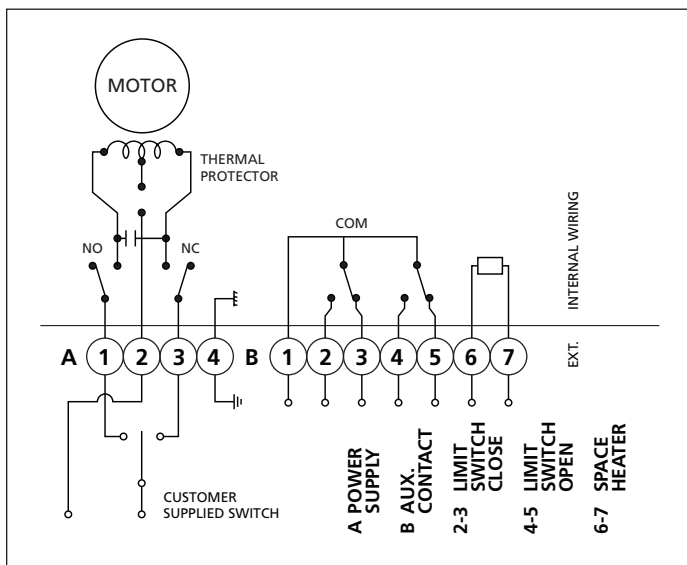


WEIGHTS & ADDITIONAL SPECIFICATIONS

Output Torque	A1	A2	B	C	D	E	F	G	H	Speed (sec)		Current Draw (amps)		Weight (lbs.)		Model No.
										115 VAC	24 VAC/VDC	115 VAC	24 VAC/VDC	On/Off	Modulating	
300 in./lb.	5.40	8.72	7.56	3.58	5.20	2.21	F03/F05/F07	14	15.5	10	15	1.0	2.0	7.9	9.7	I40300ⓄⓄ
619 in./lb.	5.40	8.72	7.56	3.58	5.36	2.37	F05/F07	14	15.5	10	15	1.0	3.5	7.9	9.7	I40600ⓄⓄ
1150 in./lb.	6.17	9.53	8.73	4.75	6.30	3.31	F05/F07/F10	17	19.0	10	15	1.5	3.0	7.9	18.3	I41100ⓄⓄ
2124 in./lb.	6.17	9.53	8.73	4.75	6.30	3.31	F07/F10	22	24.0	15	20	2.0	5.0	16.5	18.3	I42100ⓄⓄ

Ⓞ Voltage: **A** = 115 VAC; **B** = 24 VAC/VDC. Ⓞ Connectors: **S** = Straight; **N** = 90°.

WIRING DIAGRAM (115 VAC)



WIRING DIAGRAM (24 VAC/VDC)

