

# R Series

## Compact Electric Actuator



The Assured Automation R Series electric valve actuators offer a simple and cost effective solution for your valve automation needs. For use on quarter turn (90°) ball valves 1/4" to 3" and resilient seated butterfly valves (115 AC) 2" to 4".

### FEATURES

- Compact design.
- Direct mounting to valve.
- Declutchable manual override.
- Thermally protected motor.
- NEMA-4, 4X weatherproof enclosure.
- Hardened steel gearing.
- Self-lubricating shaft bearings.
- Factory sealed gearbox.
- Position Indicator.

### R SERIES MODEL NUMBERING

Model Number: \_\_\_\_\_

Output Torque: \_\_\_\_\_  
**150** = 150 in./lb.  
**300** = 300 in./lb.  
**600** = 600 in./lb.

Supply Voltage: \_\_\_\_\_  
**E** = 24 VAC  
**A** = 115 VAC  
**C** = 230 VAC  
**F** = 12 VDC  
**B** = 24 VDC

*Optional:* \_\_\_\_\_

*Accessories:* \_\_\_\_\_  
**H** = Heater  
**E** = Extra Switch

### TEMPERATURE RANGE

0°F to 150°F.

### MATERIALS OF CONSTRUCTION

#### Mounting/Shaft:

Zinc plated steel.

#### Cover:

Composite, PVC.

#### Base:

Diecast zinc alloy.

#### Base Finish:

Powder coated epoxy.

### SPECIFICATIONS

#### Enclosure:

NEMA-4, 4X, weatherproof.

#### Conduit Connection:

1/2" - 14 NPT.

#### Duty Cycle:

AC Units - 25%;

DC Units - 100%.

#### Lubrication:

Permanently lubricated gear train and bearing.

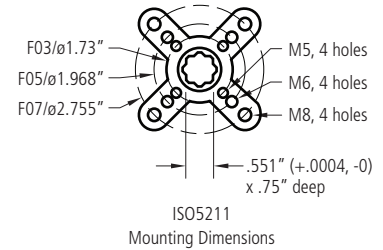
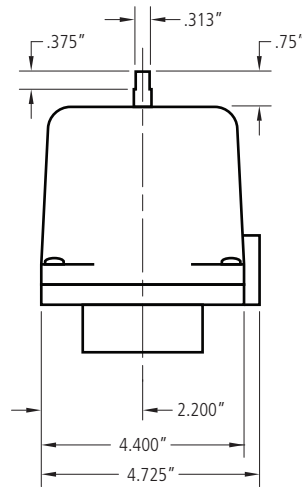
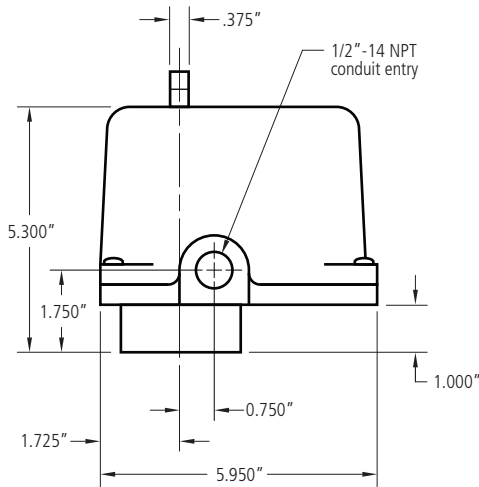
#### Mounting/Shaft:

ISO 5211/Female.

# R Series

## Compact electric actuator

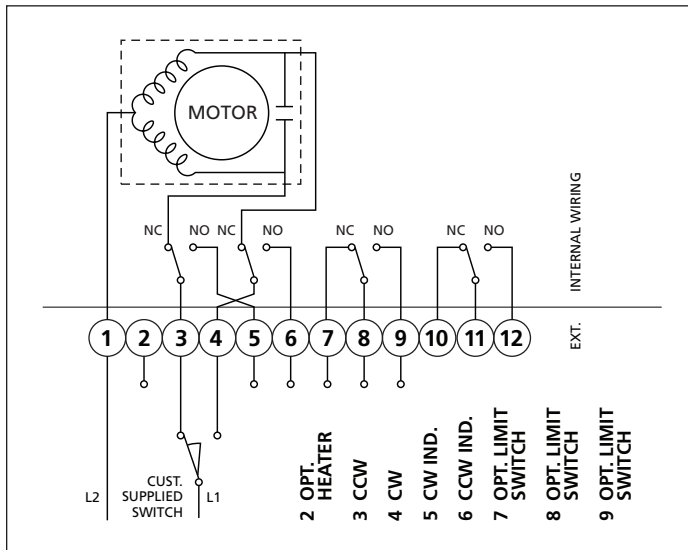
(Up to 600 in/lbs Output Torque, AC & DC)



### WEIGHTS & ADDITIONAL SPECIFICATIONS

Break Torque	Speed (sec)	Current Draw (amps stalled)					Weight (lbs.)	Model No.
		24 VAC	115 VAC	230 VAC	12 VDC	24 VDC		
150 in./lb.	5	7.9	.87	1.0	-	-	6.0	R-150
300 in./lb.	9	7.9	.87	1.0	1.5	0.7	6.0	R-300
600 in./lb.	16	7.9	.87	1.0	1.8	0.9	6.0	R-600

### WIRING DIAGRAM (VAC, Reversible)



### WIRING DIAGRAM (VDC, Reversible)

